

We shape our buildings;
thereafter they shape us.
—Winston Churchill

We began as many chapters do: 25 first-year college students, banding together as a local club. For three years we looked for the right national organization.

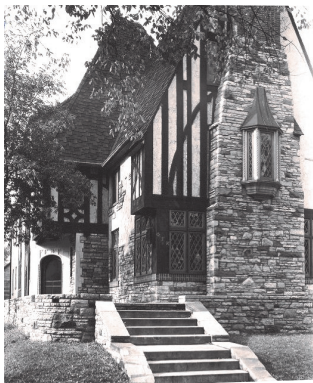
We found ours in Phi Sigma Kappa:

Historic. Venerable. 'Ivy League' yet still comfortable. With Integrity at its core.

A Fraternity for men of good will.

After renting several increasingly larger homes, we bought a barn-roofed clapboard house just five years after chartering in 1910. Saving for twelve more years enabled us to design and build our historic mansion.

We treasure our home, the chapter it inspires, and each brother. We're proud of our unbroken history of 107 years. We're proud of our unmatched supportive, deep friendships. We're proud of 1,400

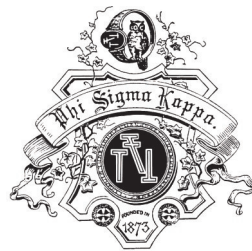


graduates, with futures launched from such a solid foundation.

Will you take the step, to ask to join with us?

We'd be honored.

Phi Sigma Kappa's Elizabethan Revival mansion, in 1933. An icon for our campus, it now shapes how we view ourselves: as leaders, builders and achievers.



Phi Sigma Kappa

317 18th Avenue SE
Minneapolis, MN 55414
Next to the 17th Avenue Dorm

Rush Coordinator **Colin Atkinson:** (651) 285-7661
atkin340@umn.edu

President **Garrett Caddes:** (801) 664-0404
cadde003@umn.edu

PHI SIGMA KAPPA



Phi Sig's *Beta Deuteron* Chapter House

A 107-year heritage of Brotherhood,
Scholarship and Character at the
University of Minnesota

SOME FRATERNITIES ARE JUST LIKE HIGH SCHOOL. SAME OLD CROWD. NOT PHI SIG.

We're from cities around the US, and even overseas. Some wanted a fresh start, and many just outgrew what they had back home. We all aim higher!

Our Pledge Ed book says it best: **"Phi Sigma Kappa offers you Hills and a Star."** —Challenges. Goals. A life better than what you saw for yourself just six months ago, before you got your U of M acceptance letter.

If you want to re-live that party scene you had in high school, sorry friend - we're not right for you.

We don't coast. Each brother here finds a role, something he can do better than anyone, to make Phi Sig a better chapter. We *rely on* and *build up* each other.

- You like **intramural sports**? We have several teams.
- Do you need **mentoring for a tough class**? Our upperclassmen are expected to help you.
- You want to **network**? We'll help you build the **confidence** & skills to unleash for a great career, campus involvement, and a **primo social life**.
- You want to **be a leader**? It's expected at Phi Sig, because we train, challenge and *rely on* you.

Phi Sig is building a brotherhood that everyone can point to as **consistently strong, tight**. And we need a few more great recruits to get us there. Not everyone gets in. Will you be selected?

Ask questions. Explore. Wait for a bid. Or come right out and tell us **"I'm in!"** That's how we joined.

OTHER FRATERNITIES HAVEN'T SEEN AN ALUM IN FIVE YEARS. —OURS ARE ON A FIRST NAME BASIS.

Why Phi Sig? There are two things we do better than any other house. Beyond leadership development, academics, and yes, great parties, one thing that sets us apart is that **our alumni rock**. We network with them for internships and jobs. We have three alumni mixers a year, and **they'll help YOU find a career**. The other noticeable Phi Sig difference is in our close **brotherhood**. **Founded on the principle of treating each other as we'd like to be treated**, we can trust each other. This is why so many companies have been started by Phi Sigs who go into business as partners. Those connections don't happen in the dorms. Trust grows when building a better chapter, together.

The president of Chase Manhattan was a Phi Sig.

Top response from this year's member survey: **"I couldn't ask for better friends."**

359 engineers are brothers.

Two US Ambassadors lived right here.

Coaches of hockey, football and crew were Phi Sigs. In fact, we brought hockey and crew to the U of M...

Chapter alumni have started **hundreds of companies**.

WE WANT YOU TO BE PROUD OF YOUR 'HOME BASE,' OUR HOUSE, AS A PHI SIG.

Let's talk about our beautiful house. Ours is the chapter where you'll be proud to bring your friends or folks. Look around — we just renovated, to make Phi Sig the best place to live on campus. **Insanely comfortable for study or socializing**, you'll drive by in 20 years and still want to stop over because of what it meant to you. —A person isn't inspired like that by his dorm room or apartment. But astonishingly, living here is **FAR LESS EXPENSIVE** than the average apartment, like 40% cheaper... We're open year-around. There's room for your car or bike, and we're as close as possible to campus. Participate in sports? We're in the midst of all Gopher athletic facilities. Our study-friendly environment

helps members maintain **a leading GPA**, well above the men's average.

All this: yet we keep costs reasonable, and have programs for Live-ins and men in the dorm, or who commute.

Call the recruitment chair or president if you're intrigued, Let's talk...

We look forward to seeing you around, and thank you for your interest. if you've got what it takes, Phi Sig will welcome you to a lifetime of brotherhood in **our extraordinary chapter**. **We're Damn Proud to be Phi Sigs!**

